

LEAD THE SMART



Recognition of Excellence

For the Promotion of Mutual Growth
2017 and 2018



10,238

Number of Private Sector Jobs Created



42 billion KRW

Revenue from Global Projects
In 53 Countries



10.27 million

Number of Uses generated at
National Spatial Information Portal

Spatial Data 10 billion KRW in exports from Global Projects

Equipped with land administration knowhow and scientific systems, LX is participating in a number of projects to create a land information system for governments in developing countries. In 2018, LX generated a revenue of 42 billion KRW from global projects in 53 countries. So far in 2019, we have won a contract to develop the cadastral information infrastructure in Turkmenistan. This project is very significant for LX because it is the first one for over 10 billion KRW. In the years to come, LX plans to increase its exports in the field of land information and to strengthen its position in the global market.

Capacity Building LX Training Center

Spatial Information Institute
The institute specializes in professional and creative research related to spatial information including policies and technologies. Furthermore, it is a leading think tank in the development of national policies on spatial information and has earned an international reputation as a leading R&D center.

National Land Information Education Center
The center was established not only to strengthen the work capability of LX personnel but to fulfill their social responsibility and public duties. Its goal is to foster professionals who are ready for the changing demands of the future by focusing on training programs based on cutting-edge technologies.

Spatial Data Academy
The academy was established to train existing professionals working with spatial data in SMEs and also for individuals currently looking for jobs. Since being established in 2014, the academy has quickly become a leading training center with an employment rate of over 90%.

RAISING + ABILITY

Raising Capacity at Home and Abroad

RAISING + ABILITY

Realizing Social Values

LX is doing its best to be faithful to its duties and social responsibilities as a public entity. A 'Social Value Implementation Office' was created to set up various programs for young people, seniors and SMEs. Two recent examples are, the 'LX Geo-dream Center' to support spatial information startups and the 'Win-Win Hope Fund' to promote the spatial information industry. As a result of these efforts, LX won the grand award for promoting a win-win growth business culture and also obtained good results on public management evaluation.

Ethical Management following the Principles

LX strives to protect citizen's property rights, and to improve cadastral policy and spatial information by upholding sound principles. We try to be honest in our work process and to promote high ethical standards within the public sector. We are also promoting mutual respect for employees, nondiscrimination, equal opportunities and fair evaluation, in order to make LX a public organization that citizens can trust.

Social Contribution Brand Nuri(知 (knowledge)

- Up[®]**
Job
Free cadastral survey to stabilize the housing issues of the underprivileged, a reduced fee cadastral surveys in natural disaster areas
- Chae[®]**
Responsibility
Lessons about drones and VR technology for schools in rural areas and work experience programs
- lhn[^]**
People
'One company for one rural town' program to promote exchange and cooperation between cities and rural towns, and free legal consultation on land property issues
- Yae[®]**
Art
'Visiting Ballet Program' in partnership with the Korean National Ballet and the operation of LX Cycling Team

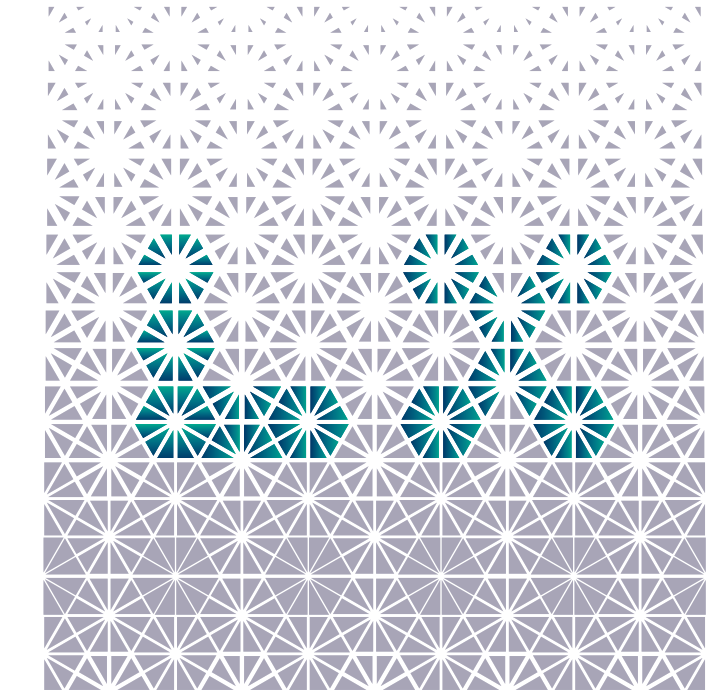
THINKING + PEOPLE

Thinking of a Better Life for the Citizens

THINKING + PEOPLE



LEAD THE SMART



120, Giji-ro, Deokjin-gu, Jeonju-si, Jeollabuk-do, Republic of Korea
Zip code 54870 | T. +82-63-713-1000 | www.lx.or.kr



LX, as a public land information provider, is preparing to take another big step forward to lead the smart society. We will collect land information about Korea in a systematic manner and provide it, through a platform to citizens, government organizations and researchers thereby providing a solid foundation for the 4th industrial revolution.

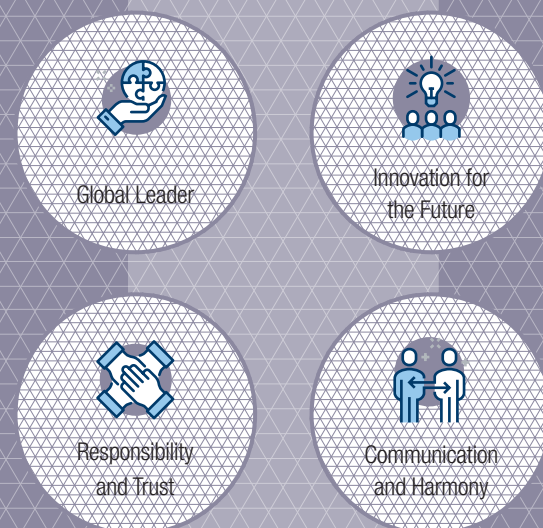
MISSION

LX's mission is to contribute to national development through support for the national spatial information system, cadastral survey and R&D in the field of spatial information and cadastral policies.

VISION

Land Information Platform Leading the Smart Society

Core Values



SMART + GRID

Setting Accurate Standards



Assessing Value of Land: Cadastral Survey

LX registers accurate land information on the cadastral record and offers a cadastral survey service to promote the protection of property rights and the efficient management of the land. Accurate land information serves as the basis for the effective public administration of land development and its utilization, and allows fair transactions regarding land ownership, land registration management and taxation. LX is conducting a national cadastral resurvey to improve the current land category system which classifies the land into 28 categories. The new land category system will be provided for both government agencies and local governments to help them prepare for the future.

Creating Digital Cadastral Information for the Development of Korean Type Cadaster

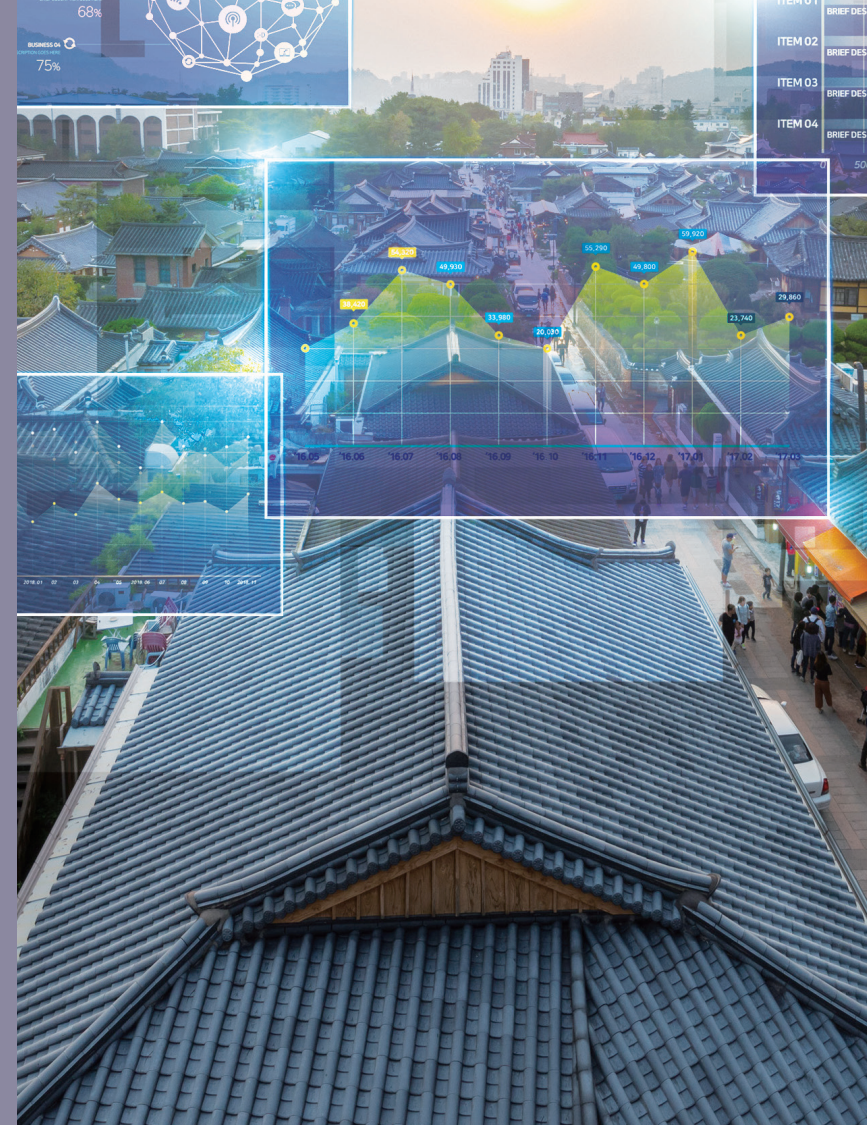
The goal of the 'Digital cadastral information implementation project' is to build the foundations for the spatial information industry by digitizing the current paper based cadastral maps, which are damaged and need to be updated. Since 2012, thanks to the cadastral resurveying project, LX has created the digital cadastral information for 5.54 million parcels out of a total of 37.43 million parcels. By 2030 when the digitization project is completed, we will have more precise cadastral information and better administrative procedures, and in turn this will help the private sector to use it more efficiently. LX promises to make citizen's lives more convenient by promoting the continued digitization of the cadastral information which is necessary for the 'New Deal Policy of Urban Restoration'.

The Process of Cadastral Resurvey



MAKING + CITY

Building a Smart City



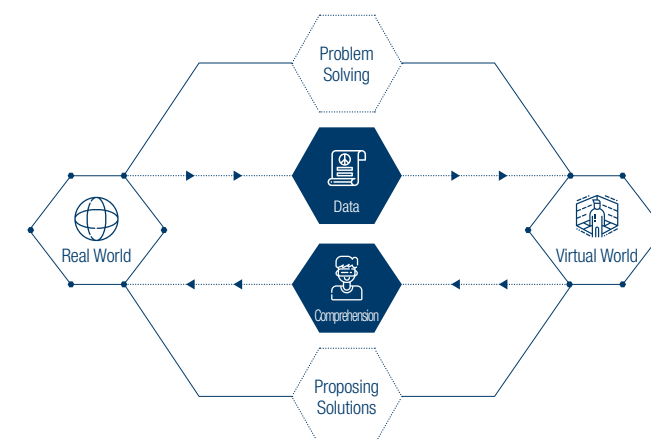
Life of a Better Quality in a High-Tech City

Smart cities aim to provide efficiency with regards to traffic, security, disaster prevention, medical services and so on, through a mutual data-sharing system of high quality and cutting-edge technology. A smart city with LX's geospatial information technology will be a platform that makes people's lives more convenient. LX was designated as a 'Smart City Service Support Entity' by the Ministry of Land, Infrastructure and Transport(MoLIT) in January, 2019. Currently we have signed an agreement with 'Korea Telecom' and 'Korea Water Resources Corporation' to promote Smart Cities.

Digital Twin-based Smart City Project: Korea's First

*Digital twin: With the digital twin technology, we can offer customized services by copying the real life of the city in a virtual reality and by using the administration information.

LX is working with Jeonju City to create Korea's first Smart City based on Digital Twin. LX signed a partnership agreement with Jeonju City in August 2018 and is currently working on a virtual city simulation platform to make the innovative Smart City a reality. LX has also created a 'living lab' made up of members from industry, academy and the local community to help solve any city problems. In this way, we aim to make a sustainable smart city with the participation of the citizens.



ADDING + VALUE

Adding Value to the Land



Future Spatial Information of Data Industry

National Spatial Data Portal
LX operates the National Spatial Information Portal (www.nsdil.go.kr) that offers access to the spatial information collected by government agencies and the private sector. All land related data, including basic land information maps, continuous cadastral maps and digital maps, are available for free.

Spatial Information Big Data Projects

LX is leading the creation of a big data platform combining the spatial information and public administration information in partnership with various government agencies. For example, we are working on the 'GIS-based big data platform' project with the Ministry of Agriculture, Food and Rural Affairs and the application of spatial information within the postal service with the Korean Post.

Flood Tracing Map and Empty House Investigation

LX has been investigating and collecting information on flood damage since 2006. We have collected and analyzed information on areas affected by flood in order to prevent flood damage in the future. In addition, the low birth rate, an aging population and low economic growth are causing many abandoned houses in both rural and urban areas. LX is investigating abandoned empty houses to help improve the residential situation.

High-Precision Digital Map

The error range of high-precision digital maps is between 10 and 20cm, which is 10 times more accurate than the existing maps. LX created, for the first time in Korea, an integrated high-precision digital map and implemented the standard DB of automatic driving. An evaluation system is currently under development.